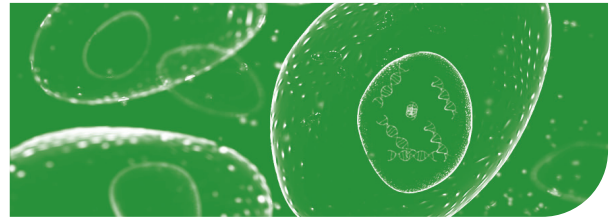


λ DNA digested with *EcoRI* and *HindIII*

Catalog #710

EXCITE | EXPLORE | ENGAGE



λ DNA digested with *EcoRI* and *HindIII*

for 20 gels

The approximate sizes of the λ *EcoRI* and *HindIII* DNA fragments, in base pairs, are 22,000, 5000, 4500, 4000, 3500, 3000, 2000, 1500, 1000 (2 bands), and 500 (2 bands). A sample volume of 20 μ l is recommended for ethidium bromide or SYBR Safe staining and 35-40 μ l is optimal for methylene blue staining. Shortly before loading, heat the fragments at 65°C for 3 minutes and quickly chill on ice. The schematic below depicts the λ *EcoRI* and *HindIII* DNA fragments (lane 2) run in parallel with a Standard DNA Gel Marker (Cat. #750, lane 1) which is λ *HindIII* plus supplemental fragments.

Storage:

Refrigerate or Freeze

