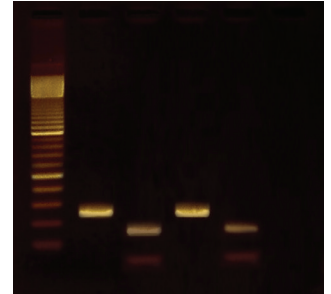


# Related Products

Cat. #345

## Exploring the Genetics of Taste: SNP Analysis of the PTC Gene Using PCR

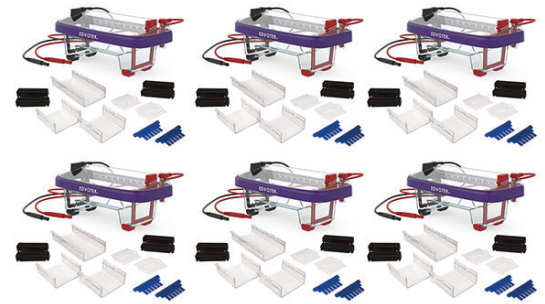
*For 25 reactions.* The objective of this experiment is to identify the presence of the single nucleotide polymorphism (SNP) in an amplified segment of the PTC gene that links detection of the characteristic taste of PTC paper. This is a set of five modules that starts with (I) extraction of DNA from buccal cells (II) amplifying the segment that contains the polymorphic nucleotide (III) digestion of the amplified fragment with the restriction enzyme that recognizes the SNP (IV) analysis by gel electrophoresis (V) tasting the PTC paper to confirm the results obtained.



Cat. #541/542

## EdvoCycler™ 2

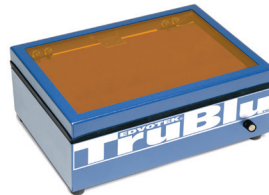
Our bestseller has been fully re-imagined to offer advanced PCR functionality at the lowest sample price. The EdvoCycler 2 features 48 wells, faster performance and ease-of-use, and a vivid touchscreen display. Made in the USA and backed by a 2 year warranty!



Cat. #557

## TruBlu™ Blue Light Transilluminator

Ideal for viewing DNA gels stained with SYBR® Safe, thus eliminating the need for UV light or ethidium bromide. The high intensity control and orange lid ensure superior visualization. Viewing Area: 14.5 x 18 cm



## SYBR® Safe DNA Stain

Non-mutagenic and SAFE for the Biotechnology Classroom! More sensitive than ethidium bromide. Excellent gel results!

Concentrate-for 750 ml

Cat. # 608



## InstaStain® Ethidium Bromide

Rapid, sensitive and contains only a few micrograms of ethidium bromide. In 3-5 minutes, an agarose gel is ready for visualization. Disposal is minimal compared to the volume of liquid waste generated from the standard ethidium bromide staining procedure.

For 40 gels, 7 x 7 cm  
Cat. # 2001

For 100 gels, 7 x 7 cm  
Cat. # 2002



Cat. #5067

## Classroom PCR LabStation™

Supports up to 25 students.

- 6 Cat. #502/504 M12 Complete™ Package (7 x 14 cm Tray & 7 x 7 cm Trays (2)
- 3 Cat. #509 DuoSource™ 150 (75/150 V, for 1 or 2 units)
- 6 Cat. #590 Variable MicroPipet (5 - 50 µl)
- 2 Cat. #534 Piccolo Microcentrifuge
- 1 Cat. #541 EdvoCycler™ (25 x 0.2 ml)
- 1 Cat. #557 TruBlu™ Blue Light Transilluminator (14.5 x 18 cm filter)
- 1 Cat. #539 1.8 L Waterbath